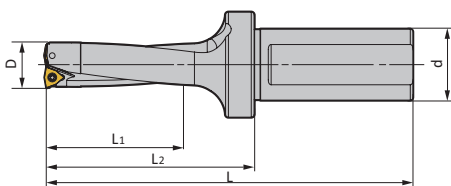
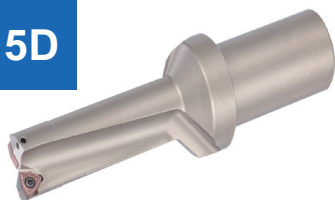


5D



Тип	Размеры (мм)					Пластина	Запчасти			
	D	d	L	L1	L2		винт	ключ		
TD5-14-25-WC03	14	25	149	72	93	WC**030208	M2.5*5	T8		
TD5-14.5-25-WC03	14.5	25	151.5	74.5	95.5	WC**030208	M2.5*6	T8		
TD5-15-25-WC03	15	25	152	77	96	WC**030208				
TD5-15.5-25-WC03	15.5	25	154.5	79.5	98.5	WC**030208				
TD5-16-25-WC03	16	25	157	82	101	WC**030208				
TD5-16.5-25-WC03	16.5	25	159.5	84.5	103.5	WC**030208				
TD5-17-25-WC03	17	25	162	87	106	WC**030208				
TD5-17.5-25-WC03	17.5	25	164.5	89.5	108.5	WC**030208				
TD5-18-25-WC03	18	25	167	92	111	WC**030208				
TD5-18.5-25-WC03	18.5	25	169.5	94.5	113.5	WC**030208				
TD5-19-25-WC03	19	25	170	97	114	WC**030208				
TD5-19.5-25-WC04	19.5	25	172.5	99.5	116.5	WC**040208				
TD5-20-25-WC04	20	25	175.5	102	119.5	WC**040208				
TD5-20.5-25-WC04	20.5	25	178.5	104.5	122.5	WC**040208				
TD5-21-25-WC04	21	25	181	107	125	WC**040208				
TD5-21.5-25-WC04	21.5	25	183.5	109.5	127.5	WC**040208				
TD5-22-25-WC04	22	25	186	112	130	WC**040208				
TD5-22.5-25-WC04	22.5	25	188.5	114.5	132.5	WC**040208				
TD5-23-25-WC04	23	25	191	117	135	WC**040208				
TD5-23.5-25-WC04	23.5	25	193.5	119.5	137.5	WC**040208				
TD5-24-25-WC05	24	25	196	122	140	WC**050308	M3.0*8	T8		
TD5-24.5-25-WC05	24.5	25	198.5	124.5	142.5	WC**050308				
TD5-25-25-WC05	25	25	202	127	146	WC**050308				
TD5-25-32-WC05	25	32	211	127	151	WC**050308				
TD5-25.5-32-WC05	25.5	32	213.5	129.5	153.5	WC**050308				
TD5-26-32-WC05	26	32	216	132	156	WC**050308				
TD5-26.5-32-WC05	26.5	32	218.5	134.5	158.5	WC**050308				
TD5-27-32-WC05	27	32	221	137	161	WC**050308				
TD5-27.5-32-WC05	27.5	32	223.5	139.5	163.5	WC**050308				
TD5-28-32-WC05	28	32	226	142	166	WC**050308				
TD5-28.5-32-WC05	28.5	32	228.5	144.5	168.5	WC**050308				
TD5-29-32-WC05	29	32	231	147	171	WC**050308				
TD5-29.5-32-WC05	29.5	32	233.5	149.5	173.5	WC**050308				
TD5-30-32-WC05	30	32	236	152	176	WC**050308				
TD5-30.5-32-WC05	30.5	32	237.5	154.5	177.5	WC**050308				
TD5-31-32-WC06	31	32	240	157	180	WC**06T308			M3.5*10	T15
TD5-31.5-32-WC06	31.5	32	241.5	159.5	181.5	WC**06T308				
TD5-32-32-WC06	32	32	245	162	185	WC**06T308				
TD5-32.5-32-WC06	32.5	32	246.5	164.5	186.5	WC**06T308				
TD5-33-32-WC06	33	32	250	167	190	WC**06T308				
TD5-33.5-32-WC06	33.5	32	251.5	169.5	191.5	WC**06T308				
TD5-34-32-WC06	34	32	254	172	194	WC**06T308				
TD5-34.5-32-WC06	34.5	32	255.5	174.5	195.5	WC**06T308				
TD5-35-32-WC06	35	32	260	177	200	WC**06T308				
TD5-35.5-32-WC06	35.5	32	261.5	179.5	201.5	WC**06T308				
TD5-36-32-WC06	36	32	265	182	205	WC**06T308				
TD5-36.5-32-WC06	36.5	32	267.5	184.5	207.5	WC**06T308				
TD5-37-32-WC06	37	32	270	187	210	WC**06T308				



TUMITEC

turning & milling technologies

Тип	Размеры (мм)					Пластина	Запчасти			
	D	d	L	L1	L2		винт	ключ		
TD5-37.5-32-WC06	37.5	32	273.5	189.5	213.5	WC**06T308	M3.5*10	T15		
TD5-38-32-WC06	38	32	272.5	192	212.5	WC**06T308				
TD5-38.5-32-WC06	38.5	32	275	194.5	215	WC**06T308				
TD5-39-32-WC06	39	32	279	197	219	WC**06T308				
TD5-39.5-32-WC06	39.5	32	278.5	199.5	218.5	WC**06T308				
TD5-40-32-WC06	40	32	280	202	220	WC**06T308				
TD5-40.5-32-WC06	40.5	32	281.5	204.5	221.5	WC**06T308				
TD5-41-32-WC06	41	32	287	207	227	WC**06T308				
TD5-41.5-32-WC06	41.5	32	286.5	209.5	226.5	WC**06T308				
TD5-65-40-WC06	65	40	428.5	327	358.5	WC**06T308				
TD5-68-40-WC06	68	40	444	342	374	WC**06T308				
TD5-70-40-WC06	70	40	452	352	372	WC**06T308				
TD5-42-40-WC08	42	40	307	212	237	WC**080412			M4.0*10	T15
TD5-42.5-40-WC08	42.5	40	309.5	214.5	239.5	WC**080412				
TD5-43-40-WC08	43	40	312	217	242	WC**080412				
TD5-43.5-40-WC08	43.5	40	314.5	219.5	244.5	WC**080412				
TD5-44-40-WC08	44	40	317	222	247	WC**080412				
TD5-44.5-40-WC08	44.5	40	319.5	224.5	249.5	WC**080412				
TD5-45-40-WC08	45	40	322	227	252	WC**080412				
TD5-45.5-40-WC08	45.5	40	324.5	229.5	254.5	WC**080412				
TD5-46-40-WC08	46	40	327	232	257	WC**080412				
TD5-46.5-40-WC08	46.5	40	329.5	234.5	259.5	WC**080412				
TD5-47-40-WC08	47	40	332	237	262	WC**080412				
TD5-47.5-40-WC08	47.5	40	334.5	239.5	264.5	WC**080412				
TD5-48-40-WC08	48	40	337	242	267	WC**080412				
TD5-48.5-40-WC08	48.5	40	339.5	244.5	269.5	WC**080412				
TD5-49-40-WC08	49	40	342	247	272	WC**080412				
TD5-49.5-40-WC08	49.5	40	344.5	249.5	274.5	WC**080412				
TD5-50-40-WC08	50	40	347	252	277	WC**080412				
TD5-50.5-40-WC08	50.5	40	349.5	254.5	279.5	WC**080412				
TD5-51-40-WC08	51	40	352	257	282	WC**080412				
TD5-52-40-WC08	52	40	357	262	287	WC**080412				
TD5-53-40-WC08	53	40	362	267	292	WC**080412				
TD5-54-40-WC08	54	40	367	272	297	WC**080412				
TD5-55-40-WC08	55	40	372	277	302	WC**080412				
TD5-56-40-WC08	56	40	377	282	307	WC**080412				
TD5-57-40-WC08	57	40	382	287	312	WC**080412				
TD5-58-40-WC08	58	40	387	292	317	WC**080412				
TD5-59-40-WC08	59	40	392	297	322	WC**080412				
TD5-60-40-WC08	60	40	397	302	327	WC**080412				

Пластины

Обозначение			Обозначение		Подача, мм/об
ISO P	ISO M	ISO K	ISO N		
WCMX030208-TU6030			WCGX030208-AL-TU1025		0,05-0,09
WCMX040208-TU6030			WCGX040208-AL-TU1025		0,05-0,09
WCMX050308-TU6030			WCGX050308-AL-TU1025		0,06-0,10
WCMX06T308-TU6030			WCGX06T308-AL-TU1025		0,08-0,16
WCMX080412-TU6030			WCGX080412-AL-TU1025		0,10-0,20

P (Стали)				M (Нержавеющие стали)		K (Чугуны)			N
Углерод	Низколег.	Высоколег.	Улучш.	Мартенсит.	Аустенит.	Ковкий	Серый	ВЧШГ	Al и Cu
170-240	140-220	120-180	120-170	110-230	110-220	120-220	170-240	130-200	250-300

