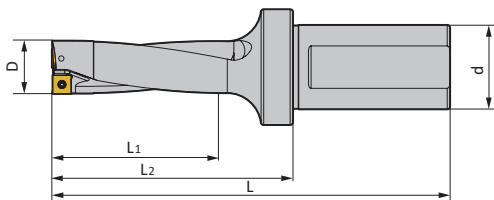
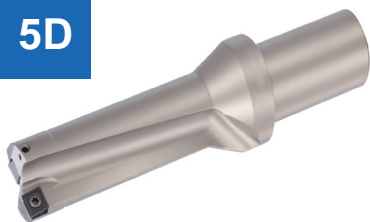


5D



Тип	Размеры (мм)					Пластина	Запчасти	
	D	d	L	L1	L2		винт	ключ
TD5-12.5-20-SP05	12.5	20	133.5	64.5	83.5	SP**050204	M2.2*5	T6
TD5-13-20-SP05	13	20	136	96	86	SP**050204		
TD5-13.5-20-SP05	13.5	20	138.5	69.5	88.5	SP**050204		
TD5-14-25-SP05	14	25	149	72	93	SP**050204		
TD5-14.5-25-SP05	14.5	25	151.5	74.5	95.5	SP**050204		
TD5-15-25-SP05	15	25	154	77	98	SP**050204		
TD5-15.5-25-SP05	15.5	25	156.5	79.5	100.5	SP**050204	M2.2*6	T7
TD5-16-25-SP06	16	25	159	82	103	SP**060204		
TD5-16.5-25-SP06	16.5	25	161.5	84.5	105.5	SP**060204		
TD5-17-25-SP06	17	25	162	87	106	SP**060204		
TD5-17.5-25-SP06	17.5	25	164.5	89.5	108.5	SP**060204		
TD5-18-25-SP06	18	25	166	92	110	SP**060204		
TD5-18.5-25-SP06	18.5	25	168.5	94.5	112.5	SP**060204		
TD5-19-25-SP06	19	25	170	97	114	SP**060204		
TD5-19.5-25-SP06	19.5	25	172.5	99.5	116.5	SP**060204		
TD5-20-25-SP06	20	25	177	102	121	SP**060204		
TD5-20.5-25-SP06	20.5	25	179.5	104.5	123.5	SP**060204		
TD5-21-25-SP06	21	25	182	107	126	SP**060204		
TD5-21.5-25-SP06	21.5	25	184.5	109.5	128.5	SP**060204		
TD5-22-25-SP07	22	25	187	112	131	SP**07T308		
TD5-22.5-25-SP07	22.5	25	189.5	114.5	133.5	SP**07T308		
TD5-23-25-SP07	23	25	192	117	136	SP**07T308		
TD5-23.5-25-SP07	23.5	25	194.5	119.5	138.5	SP**07T308		
TD5-24-25-SP07	24	25	197	122	141	SP**07T308		
TD5-24.5-25-SP07	24.5	25	199.5	124.5	143.5	SP**07T308		
TD5-25-25-SP07	25	25	203	127	147	SP**07T308		
TD5-25-32-SP07	25.5	32	214.5	129.5	154.5	SP**07T308		
TD5-26-32-SP07	26	32	217	132	157	SP**07T308		
TD5-26.5-32-SP07	26.5	32	219.5	134.5	159.5	SP**07T308		
TD5-27-32-SP07	27	32	222	137	162	SP**07T308		
TD5-27.5-32-SP07	27.5	32	224.5	139.5	164.5	SP**07T308		
TD5-51-40-SP07	51	40	354	257	284	SP**07T308	M3.5*10	T15
TD5-52-40-SP07	52	40	359	262	289	SP**07T308		
TD5-53-40-SP07	53	40	364	267	294	SP**07T308		
TD5-54-40-SP07	54	40	369	272	299	SP**07T308		
TD5-55-40-SP07	55	40	374	277	304	SP**07T308		
TD5-28-32-SP09	28	32	227	142	167	SP**090408		
TD5-28.5-32-SP09	28.5	32	229.5	144.5	169.5	SP**090408		
TD5-29-32-SP09	29	32	232	147	172	SP**090408		
TD5-29.5-32-SP09	29.5	32	234.5	149.5	174.5	SP**090408		
TD5-30-32-SP09	30	32	237	150	177	SP**090408		
TD5-30.5-32-SP09	30.5	32	239.5	152.5	179.5	SP**090408		
TD5-31-32-SP09	31	32	242	155	182	SP**090408		
TD5-31.5-32-SP09	31.5	32	244.5	157.5	184.5	SP**090408		
TD5-32-32-SP09	32	32	248	162	188	SP**090408		



Тип	Размеры (мм)					Пластина	Запчасти	
	D	d	L	L1	L2		винт	ключ
TD5-32.5-32-SP09	32.5	32	246.5	164.5	186.5	SP**090408	M3.5*10	T15
TD5-33-32-SP09	33	32	249	167	189	SP**090408		
TD5-33.5-32-SP09	33.5	32	251.5	169.5	191.5	SP**090408		
TD5-56-40-SP09	56	40	379	282	309	SP**090408		
TD5-57-40-SP09	57	40	384	287	314	SP**090408		
TD5-58-40-SP09	58	40	389	292	319	SP**090408		
TD5-59-40-SP09	59	40	395	297	325	SP**090408		
TD5-60-40-SP09	60	40	400	302	330	SP**090408		
TD5-34-32-SP11	34	32	258	172	198	SP**110408		
TD5-34.5-32-SP11	34.5	32	260.5	174.5	200.5	SP**110408		
TD5-35-32-SP11	35	32	263	177	203	SP**110408		
TD5-35.5-32-SP11	35.5	32	265.5	179.5	205.5	SP**110408		
TD5-36-32-SP11	36	32	268	182	208	SP**110408		
TD5-36.5-32-SP11	36.5	32	270.5	184.5	210.5	SP**110408		
TD5-37-32-SP11	37	32	272	187	212	SP**110408		
TD5-37.5-32-SP11	37.5	32	274.5	189.5	214.5	SP**110408		
TD5-38-32-SP11	38	32	277	192	217	SP**110408		
TD5-38.5-32-SP11	38.5	32	279.5	194.5	219.5	SP**110408		
TD5-39-32-SP11	39	32	282	197	222	SP**110408		
TD5-39.5-32-SP11	39.5	32	284.5	199.5	224.5	SP**110408		
TD5-40-32-SP11	40	32	287	202	227	SP**110408		
TD5-40.5-32-SP11	40.5	32	289.5	204.5	229.5	SP**110408		
TD5-41-32-SP11	41	32	292	207	232	SP**110408		
TD5-42-40-SP14	42	40	305	212	235	SP**140512		
TD5-43-40-SP14	43	40	310	217	240	SP**140512		
TD5-44-40-SP14	44	40	318	222	248	SP**140512		
TD5-45-40-SP14	45	40	323	227	253	SP**140512		
TD5-46-40-SP14	46	40	329	232	259	SP**140512		
TD5-47-40-SP14	47	40	334	237	264	SP**140512		
TD5-48-40-SP14	48	40	339	242	269	SP**140512		
TD5-49-40-SP14	49	40	344	247	274	SP**140512		
TD5-50-40-SP14	50	40	349	252	279	SP**140512		

Пластины

Обозначение			Обозначение	Подача, мм/об
ISO P	ISO M	ISO K	ISO N	
SPMG050204-TZ-TU6030			SPGT050204-TU1025	0,05-0,09
SPMG060204-TZ-TU6030			SPGT060204-TU1025	0,05-0,09
SPMG07T308-TZ-TU6030			SPGT07T308-TU1025	0,06-0,10
SPMG090408-TZ-TU6030			SPGT090408-TU1025	0,08-0,16
SPMG110408-TZ-TU6030			SPGT110408-TU1025	0,10-0,20
SPMG140512-TZ-TU6030			SPGT140512-TU1025	0,12-0,24

P (Стали)				M (Нержавеющие стали)		K (Чугуны)			N
Углерод.	Низколег.	Высоколег.	Улучш.	Мартенсит.	Аустенит.	Ковкий	Серый	ВЧШГ	Al и Cu
170-240	140-220	120-180	120-170	110-230	110-220	120-220	170-240	130-200	250-300

