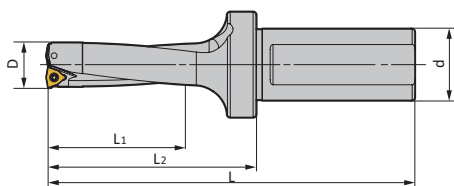
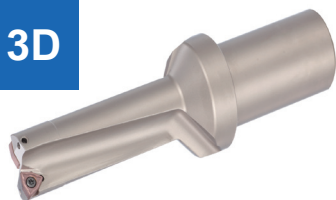


3D



Тип	Размеры (мм)					Пластина	Запчасти	
	D	d	L	L1	L2		винт	ключ
TD3-14-25-WC03	14	25	121	44	65	WC**030208	M2.5*5	T8
TD3-14.5-25-WC03	14.5	25	122.5	45.5	66.5	WC**030208	M2.5*6	T8
TD3-15-25-WC03	15	25	122	47	66	WC**030208		
TD3-15.5-25-WC03	15.5	25	123.5	48.5	67.5	WC**030208		
TD3-16-25-WC03	16	25	125	50	69	WC**030208		
TD3-16.5-25-WC03	16.5	25	126.5	51.5	70.5	WC**030208		
TD3-17-25-WC03	17	25	128	53	72	WC**030208		
TD3-17.5-25-WC03	17.5	25	129.5	54.5	73.5	WC**030208		
TD3-18-25-WC03	18	25	131	56	75	WC**030208		
TD3-18.5-25-WC03	18.5	25	132.5	57.5	76.5	WC**030208		
TD3-19-25-WC03	19	25	132	59	76	WC**030208		
TD3-19.5-25-WC04	19.5	25	133.5	60.5	77.5	WC**040208	M3.0*8	T8
TD3-20-25-WC04	20	25	135.5	62	79.5	WC**040208		
TD3-20.5-25-WC04	20.5	25	137.5	63.5	81.5	WC**040208		
TD3-21-25-WC04	21	25	139	65	83	WC**040208		
TD3-21.5-25-WC04	21.5	25	140.5	66.5	84.5	WC**040208		
TD3-22-25-WC04	22	25	142	68	86	WC**040208		
TD3-22.5-25-WC04	22.5	25	143.5	69.5	87.5	WC**040208		
TD3-23-25-WC04	23	25	145	71	89	WC**040208		
TD3-23.5-25-WC04	23.5	25	146.5	72.5	90.5	WC**040208		
TD3-24-25-WC05	24	25	148	74	92	WC**050308		
TD3-24.5-25-WC05	24.5	25	149.5	75.5	93.5	WC**050308		
TD3-25-25-WC05	25	25	152	77	96	WC**050308		
TD3-25-32-WC05	25	32	161	77	101	WC**050308		
TD3-25.5-32-WC05	25.5	32	162.5	78.5	102.5	WC**050308		
TD3-26-32-WC05	26	32	164	80	104	WC**050308		
TD3-26.5-32-WC05	26.5	32	165.5	81.5	105.5	WC**050308		
TD3-27-32-WC05	27	32	167	83	107	WC**050308		
TD3-27.5-32-WC05	27.5	32	168.5	84.5	108.5	WC**050308		
TD3-28-32-WC05	28	32	170	86	110	WC**050308		
TD3-28.5-32-WC05	28.5	32	171.5	87.5	111.5	WC**050308	M3.5*10	T15
TD3-29-32-WC05	29	32	173	89	113	WC**050308		
TD3-29.5-32-WC05	29.5	32	174.5	90.5	114.5	WC**050308		
TD3-30-32-WC05	30	32	176	92	116	WC**050308		
TD3-30.5-32-WC05	30.5	32	176.5	93.5	116.5	WC**050308		
TD3-31-32-WC06	31	32	178	95	118	WC**06T308		
TD3-31.5-32-WC06	31.5	32	178.5	96.5	118.5	WC**06T308		
TD3-32-32-WC06	32	32	181	98	121	WC**06T308		
TD3-32.5-32-WC06	32.5	32	181.5	99.5	121.5	WC**06T308		
TD3-33-32-WC06	33	32	184	101	124	WC**06T308		
TD3-33.5-32-WC06	33.5	32	184.5	102.5	124.5	WC**06T308		
TD3-34-32-WC06	34	32	186	104	126	WC**06T308		
TD3-34.5-32-WC06	34.5	32	186.5	105.5	126.5	WC**06T308		
TD3-35-32-WC06	35	32	190	107	130	WC**06T308		
TD3-35.5-32-WC06	35.5	32	190.5	108.5	130.5	WC**06T308		
TD3-36-32-WC06	36	32	193	110	133	WC**06T308		
TD3-36.5-32-WC06	36.5	32	194.5	111.5	134.5	WC**06T308		
TD3-37-32-WC06	37	32	196	113	136	WC**06T308		



Тип	Размеры (мм)					Пластина	Запчасти			
	D	d	L	L1	L2		винт	ключ		
TD3-37.5-32-WC06	37.5	32	198.5	114.5	138.5	WC**06T308	M3.5*10	T15		
TD3-38-32-WC06	38	32	196.5	116	136.5	WC**06T308				
TD3-38.5-32-WC06	38.5	32	198	117.5	138	WC**06T308				
TD3-39-32-WC06	39	32	197	119	137	WC**06T308				
TD3-39.5-32-WC06	39.5	32	199.5	120.5	139.5	WC**06T308				
TD3-40-32-WC06	40	32	200	122	140	WC**06T308				
TD3-40.5-32-WC06	40.5	32	200.5	123.5	140.5	WC**06T308				
TD3-41-32-WC06	41	32	205	125	145	WC**06T308				
TD3-41.5-32-WC06	41.5	32	203.5	126.5	143.5	WC**06T308				
TD3-65-40-WC06	65	40	298.5	197	228.5	WC**06T308				
TD3-68-40-WC06	68	40	308	206	238	WC**06T308				
TD3-70-40-WC06	70	40	302	212	232	WC**06T308				
TD3-42-40-WC08	42	40	223	128	153	WC**080412			M4.0*10	T15
TD3-42.5-40-WC08	42.5	40	224.5	129.5	154.5	WC**080412				
TD3-43-40-WC08	43	40	226	131	156	WC**080412				
TD3-43.5-40-WC08	43.5	40	227.5	132.5	157.5	WC**080412				
TD3-44-40-WC08	44	40	229	134	159	WC**080412				
TD3-44.5-40-WC08	44.5	40	230.5	135.5	160.5	WC**080412				
TD3-45-40-WC08	45	40	232	137	162	WC**080412				
TD3-45.5-40-WC08	45.5	40	233.5	138.5	163.5	WC**080412				
TD3-46-40-WC08	46	40	235	140	165	WC**080412				
TD3-46.5-40-WC08	46.5	40	236.5	141.5	166.5	WC**080412				
TD3-47-40-WC08	47	40	238	143	168	WC**080412				
TD3-47.5-40-WC08	47.5	40	239.5	144.5	169.5	WC**080412				
TD3-48-40-WC08	48	40	241	146	171	WC**080412				
TD3-48.5-40-WC08	48.5	40	242.5	147.5	172.5	WC**080412				
TD3-49-40-WC08	49	40	244	149	174	WC**080412				
TD3-49.5-40-WC08	49.5	40	245.5	150.5	175.5	WC**080412				
TD3-50-40-WC08	50	40	247	152	177	WC**080412				
TD3-50.5-40-WC08	50.5	40	249	154	179	WC**080412				
TD3-51-40-WC08	51	40	250	155	180	WC**080412				
TD3-52-40-WC08	52	40	253	158	183	WC**080412				
TD3-53-40-WC08	53	40	256	161	186	WC**080412				
TD3-54-40-WC08	54	40	259	164	189	WC**080412				
TD3-55-40-WC08	55	40	262	167	192	WC**080412				
TD3-56-40-WC08	56	40	265	170	195	WC**080412				
TD3-57-40-WC08	57	40	268	173	198	WC**080412				
TD3-58-40-WC08	58	40	271	176	201	WC**080412				
TD3-59-40-WC08	59	40	274	179	204	WC**080412				
TD3-60-40-WC08	60	40	277	182	207	WC**080412				

Пластины

Обозначение			Обозначение		Подача, мм/об
ISO P	ISO M	ISO K	ISO N		
WCMX030208-TU6030			WCGX030208-AL-TU1025		0,05-0,09
WCMX040208-TU6030			WCGX040208-AL-TU1025		0,05-0,09
WCMX050308-TU6030			WCGX050308-AL-TU1025		0,06-0,10
WCMX06T308-TU6030			WCGX06T308-AL-TU1025		0,08-0,16
WCMX080412-TU6030			WCGX080412-AL-TU1025		0,10-0,20

P (Стали)				M (Нержавеющие стали)		K (Чугуны)			N
Углерод.	Низколег.	Высоколег.	Улучш.	Мартенсит.	Аустенит.	Ковкий	Серый	ВЧШГ	Al и Cu
170-240	140-220	120-180	120-170	110-230	110-220	120-220	170-240	130-200	250-300

