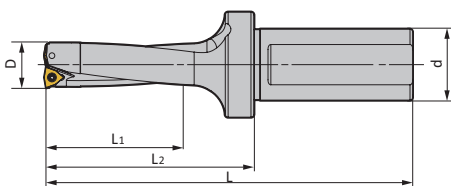
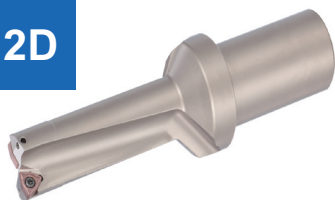


2D



| Тип | Размеры (мм) | | | | | Пластина | Запчасти | |
|------------------|--------------|----|-------|----|------|------------|----------|------|
| | D | d | L | L1 | L2 | | винт | ключ |
| TD2-14-25-WC03 | 14 | 25 | 107 | 30 | 51 | WC**030208 | M2.5*5 | T8 |
| TD2-14.5-25-WC03 | 14.5 | 25 | 108 | 31 | 52 | WC**030208 | M2.5*6 | T8 |
| TD2-15-25-WC03 | 15 | 25 | 107 | 32 | 51 | WC**030208 | | |
| TD2-15.5-25-WC03 | 15.5 | 25 | 108 | 33 | 52 | WC**030208 | | |
| TD2-16-25-WC03 | 16 | 25 | 109 | 34 | 53 | WC**030208 | | |
| TD2-16.5-25-WC03 | 16.5 | 25 | 110 | 35 | 54 | WC**030208 | | |
| TD2-17-25-WC03 | 17 | 25 | 111 | 36 | 55 | WC**030208 | | |
| TD2-17.5-25-WC03 | 17.5 | 25 | 112 | 37 | 56 | WC**030208 | | |
| TD2-18-25-WC03 | 18 | 25 | 113 | 38 | 57 | WC**030208 | | |
| TD2-18.5-25-WC03 | 18.5 | 25 | 114 | 39 | 58 | WC**030208 | | |
| TD2-19-25-WC03 | 19 | 25 | 113 | 40 | 57 | WC**030208 | | |
| TD2-19.5-25-WC04 | 19.5 | 25 | 114 | 41 | 58 | WC**040208 | | |
| TD2-20-25-WC04 | 20 | 25 | 115.5 | 42 | 59.5 | WC**040208 | | |
| TD2-20.5-25-WC04 | 20.5 | 25 | 117 | 43 | 61 | WC**040208 | | |
| TD2-21-25-WC04 | 21 | 25 | 118 | 44 | 62 | WC**040208 | | |
| TD2-21.5-25-WC04 | 21.5 | 25 | 119 | 45 | 63 | WC**040208 | | |
| TD2-22-25-WC04 | 22 | 25 | 120 | 46 | 64 | WC**040208 | | |
| TD2-22.5-25-WC04 | 22.5 | 25 | 121 | 47 | 65 | WC**040208 | | |
| TD2-23-25-WC04 | 23 | 25 | 122 | 48 | 66 | WC**040208 | | |
| TD2-23.5-25-WC04 | 23.5 | 25 | 123 | 49 | 67 | WC**040208 | | |
| TD2-24-25-WC05 | 24 | 25 | 124 | 50 | 68 | WC**050308 | | |
| TD2-24.5-25-WC05 | 24.5 | 25 | 125 | 51 | 69 | WC**050308 | | |
| TD2-25-25-WC05 | 25 | 25 | 127 | 52 | 71 | WC**050308 | | |
| TD2-25-32-WC05 | 25 | 32 | 136 | 52 | 76 | WC**050308 | | |
| TD2-25.5-32-WC05 | 25.5 | 32 | 137 | 53 | 77 | WC**050308 | | |
| TD2-26-32-WC05 | 26 | 32 | 138 | 54 | 78 | WC**050308 | | |
| TD2-26.5-32-WC05 | 26.5 | 32 | 139 | 55 | 79 | WC**050308 | | |
| TD2-27-32-WC05 | 27 | 32 | 140 | 56 | 80 | WC**050308 | | |
| TD2-27.5-32-WC05 | 27.5 | 32 | 141 | 57 | 81 | WC**050308 | | |
| TD2-28-32-WC05 | 28 | 32 | 142 | 58 | 82 | WC**050308 | | |
| TD2-28.5-32-WC05 | 28.5 | 32 | 143 | 59 | 83 | WC**050308 | | |
| TD2-29-32-WC05 | 29 | 32 | 144 | 60 | 84 | WC**050308 | | |
| TD2-29.5-32-WC05 | 29.5 | 32 | 145 | 61 | 85 | WC**050308 | | |
| TD2-30-32-WC05 | 30 | 32 | 146 | 62 | 86 | WC**050308 | | |
| TD2-30.5-32-WC05 | 30.5 | 32 | 146 | 63 | 86 | WC**050308 | | |
| TD2-31-32-WC06 | 31 | 32 | 147 | 64 | 87 | WC**06T308 | | |
| TD2-31.5-32-WC06 | 31.5 | 32 | 147 | 65 | 87 | WC**06T308 | | |
| TD2-32-32-WC06 | 32 | 32 | 149 | 66 | 89 | WC**06T308 | | |
| TD2-32.5-32-WC06 | 32.5 | 32 | 149 | 67 | 89 | WC**06T308 | | |
| TD2-33-32-WC06 | 33 | 32 | 151 | 68 | 91 | WC**06T308 | | |
| TD2-33.5-32-WC06 | 33.5 | 32 | 151 | 69 | 91 | WC**06T308 | | |
| TD2-34-32-WC06 | 34 | 32 | 152 | 70 | 92 | WC**06T308 | | |
| TD2-34.5-32-WC06 | 34.5 | 32 | 152 | 71 | 92 | WC**06T308 | | |
| TD2-35-32-WC06 | 35 | 32 | 155 | 72 | 95 | WC**06T308 | | |
| TD2-35.5-32-WC06 | 35.5 | 32 | 155 | 73 | 95 | WC**06T308 | | |
| TD2-36-32-WC06 | 36 | 32 | 157 | 74 | 97 | WC**06T308 | | |
| TD2-36.5-32-WC06 | 36.5 | 32 | 158 | 75 | 98 | WC**06T308 | | |
| TD2-37-32-WC06 | 37 | 32 | 159 | 76 | 99 | WC**06T308 | | |



| Тип | Размеры (мм) | | | | | Пластина | Запчасти | | | |
|------------------|--------------|----|-------|-----|-------|------------|----------|------|---------|-----|
| | D | d | L | L1 | L2 | | винт | ключ | | |
| TD2-37.5-32-WC06 | 37.5 | 32 | 161 | 77 | 101 | WC**06T308 | M3.5*10 | T15 | | |
| TD2-38-32-WC06 | 38 | 32 | 158.5 | 78 | 98.5 | WC**06T308 | | | | |
| TD2-38.5-32-WC06 | 38.5 | 32 | 159.5 | 79 | 99.5 | WC**06T308 | | | | |
| TD2-39-32-WC06 | 39 | 32 | 162 | 80 | 102 | WC**06T308 | | | | |
| TD2-39.5-32-WC06 | 39.5 | 32 | 160 | 81 | 100 | WC**06T308 | | | | |
| TD2-40-32-WC06 | 40 | 32 | 160 | 82 | 100 | WC**06T308 | | | | |
| TD2-40.5-32-WC06 | 40.5 | 32 | 160 | 83 | 100 | WC**06T308 | | | | |
| TD2-41-32-WC06 | 41 | 32 | 164 | 84 | 104 | WC**06T308 | | | | |
| TD2-41.5-32-WC06 | 41.5 | 32 | 162 | 85 | 102 | WC**06T308 | | | | |
| TD2-65-40-WC06 | 65 | 40 | 233.5 | 132 | 163.5 | WC**06T308 | | | | |
| TD2-68-40-WC06 | 68 | 40 | 240 | 138 | 170 | WC**06T308 | | | | |
| TD2-70-40-WC06 | 70 | 40 | 232 | 142 | 162 | WC**06T308 | | | | |
| TD2-42-40-WC08 | 42 | 40 | 181 | 86 | 111 | WC**080412 | | | M4.0*10 | T15 |
| TD2-42.5-40-WC08 | 42.5 | 40 | 182 | 87 | 112 | WC**080412 | | | | |
| TD2-43-40-WC08 | 43 | 40 | 183 | 88 | 113 | WC**080412 | | | | |
| TD2-43.5-40-WC08 | 43.5 | 40 | 184 | 89 | 114 | WC**080412 | | | | |
| TD2-44-40-WC08 | 44 | 40 | 185 | 90 | 115 | WC**080412 | | | | |
| TD2-44.5-40-WC08 | 44.5 | 40 | 186 | 91 | 116 | WC**080412 | | | | |
| TD2-45-40-WC08 | 45 | 40 | 187 | 92 | 117 | WC**080412 | | | | |
| TD2-45.5-40-WC08 | 45.5 | 40 | 188 | 93 | 118 | WC**080412 | | | | |
| TD2-46-40-WC08 | 46 | 40 | 189 | 94 | 119 | WC**080412 | | | | |
| TD2-46.5-40-WC08 | 46.5 | 40 | 190 | 95 | 120 | WC**080412 | | | | |
| TD2-47-40-WC08 | 47 | 40 | 191 | 96 | 121 | WC**080412 | | | | |
| TD2-47.5-40-WC08 | 47.5 | 40 | 192 | 97 | 122 | WC**080412 | | | | |
| TD2-48-40-WC08 | 48 | 40 | 193 | 98 | 123 | WC**080412 | | | | |
| TD2-48.5-40-WC08 | 48.5 | 40 | 194 | 99 | 124 | WC**080412 | | | | |
| TD2-49-40-WC08 | 49 | 40 | 195 | 100 | 125 | WC**080412 | | | | |
| TD2-49.5-40-WC08 | 49.5 | 40 | 196 | 101 | 126 | WC**080412 | | | | |
| TD2-50-40-WC08 | 50 | 40 | 197 | 102 | 127 | WC**080412 | | | | |
| TD2-50.5-40-WC08 | 50.5 | 40 | 197 | 103 | 127 | WC**080412 | | | | |
| TD2-51-40-WC08 | 51 | 40 | 199 | 104 | 129 | WC**080412 | | | | |
| TD2-52-40-WC08 | 52 | 40 | 201 | 106 | 131 | WC**080412 | | | | |
| TD2-53-40-WC08 | 53 | 40 | 203 | 108 | 133 | WC**080412 | | | | |
| TD2-54-40-WC08 | 54 | 40 | 205 | 110 | 135 | WC**080412 | | | | |
| TD2-55-40-WC08 | 55 | 40 | 207 | 112 | 137 | WC**080412 | | | | |
| TD2-56-40-WC08 | 56 | 40 | 209 | 114 | 139 | WC**080412 | | | | |
| TD2-57-40-WC08 | 57 | 40 | 211 | 116 | 141 | WC**080412 | | | | |
| TD2-58-40-WC08 | 58 | 40 | 213 | 118 | 143 | WC**080412 | | | | |
| TD2-59-40-WC08 | 59 | 40 | 215 | 120 | 145 | WC**080412 | | | | |
| TD2-60-40-WC08 | 60 | 40 | 217 | 122 | 147 | WC**080412 | | | | |

Пластины

| Обозначение | | | Обозначение | Подача, мм/об |
|-------------------|-------|-------|----------------------|---------------|
| ISO P | ISO M | ISO K | ISO N | |
| WCMX030208-TU6030 | | | WCGX030208-AL-TU1025 | 0,05-0,09 |
| WCMX040208-TU6030 | | | WCGX040208-AL-TU1025 | 0,05-0,09 |
| WCMX050308-TU6030 | | | WCGX050308-AL-TU1025 | 0,06-0,10 |
| WCMX06T308-TU6030 | | | WCGX06T308-AL-TU1025 | 0,08-0,16 |
| WCMX080412-TU6030 | | | WCGX080412-AL-TU1025 | 0,10-0,20 |

| P (Стали) | | | | M (Нержавеющие стали) | | K (Чугуны) | | | N |
|-----------|-----------|------------|---------|-----------------------|-----------|------------|---------|---------|---------|
| Углерод. | Низколег. | Высоколег. | Улучш. | Мартенсит. | Аустенит. | Ковкий | Серый | ВЧШГ | Al и Cu |
| 170-240 | 140-220 | 120-180 | 120-170 | 110-230 | 110-220 | 120-220 | 170-240 | 130-200 | 250-300 |

