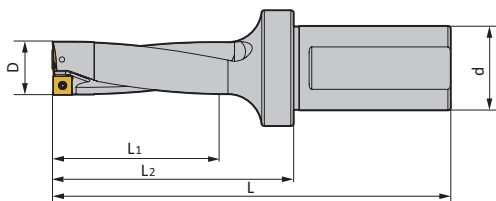
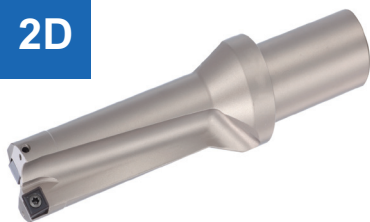


2D



Тип	Размеры (мм)					Пластина	Запчасти	
	D	d	L	L1	L2		винт	ключ
TD2-12.5-20-SP05	12.5	20	96	27	46	SP**050204	M2.2*5	T6
TD2-13-20-SP05	13	20	97	28	47	SP**050204		
TD2-13.5-20-SP05	13.5	20	98	29	48	SP**050204		
TD2-14-25-SP05	14	25	107	30	51	SP**050204		
TD2-14.5-25-SP05	14.5	25	108	31	52	SP**050204		
TD2-15-25-SP05	15	25	109	32	53	SP**050204		
TD2-15.5-25-SP05	15.5	25	110	33	54	SP**050204	M2.2*6	T7
TD2-16-25-SP06	16	25	111	34	55	SP**060204		
TD2-16.5-25-SP06	16.5	25	112	35	56	SP**060204		
TD2-17-25-SP06	17	25	111	36	55	SP**060204		
TD2-17.5-25-SP06	17.5	25	112	37	56	SP**060204		
TD2-18-25-SP06	18	25	112	38	56	SP**060204		
TD2-18.5-25-SP06	18.5	25	113	39	57	SP**060204		
TD2-19-25-SP06	19	25	113	40	57	SP**060204		
TD2-19.5-25-SP06	19.5	25	114	41	58	SP**060204		
TD2-20-25-SP06	20	25	117	42	61	SP**060204		
TD2-20.5-25-SP06	20.5	25	118	43	62	SP**060204		
TD2-21-25-SP06	21	25	119	44	63	SP**060204		
TD2-21.5-25-SP06	21.5	25	120	45	64	SP**060204		
TD2-22-25-SP07	22	25	121	46	65	SP**07T308		
TD2-22.5-25-SP07	22.5	25	122	47	66	SP**07T308		
TD2-23-25-SP07	23	25	123	48	67	SP**07T308		
TD2-23.5-25-SP07	23.5	25	124	49	68	SP**07T308		
TD2-24-25-SP07	24	25	125	50	69	SP**07T308		
TD2-24.5-25-SP07	24.5	25	126	51	70	SP**07T308		
TD2-25-25-SP07	25	25	128	52	72	SP**07T308		
TD2-25-32-SP07	25	32	137	52	77	SP**07T308		
TD2-25.5-32-SP07	25.5	32	138	53	78	SP**07T308		
TD2-26-32-SP07	26	32	139	54	79	SP**07T308		
TD2-26.5-32-SP07	26.5	32	140	55	80	SP**07T308		
TD2-27-32-SP07	27	32	141	56	81	SP**07T308		
TD2-27.5-32-SP07	27.5	32	142	57	82	SP**07T308		
TD2-51-40-SP07	51	40	201	104	131	SP**07T308		
TD2-52-40-SP07	52	40	203	106	133	SP**07T308		
TD2-53-40-SP07	53	40	205	108	135	SP**07T308		
TD2-54-40-SP07	54	40	207	110	137	SP**07T308		
TD2-55-40-SP07	55	40	209	112	139	SP**07T308		
TD2-28-32-SP09	28	32	143	58	83	SP**090408	M3.5*10	T15
TD2-28.5-32-SP09	28.5	32	144	59	84	SP**090408		
TD2-29-32-SP09	29	32	145	60	85	SP**090408		
TD2-29.5-32-SP09	29.5	32	146	60	86	SP**090408		
TD2-30-32-SP09	30	32	144	62	84	SP**090408		
TD2-30.5-32-SP09	30.5	32	145	63	85	SP**090408		
TD2-31-32-SP09	31	32	146	64	86	SP**090408		
TD2-31.5-32-SP09	31.5	32	147	65	87	SP**090408		
TD2-32-32-SP09	32	32	148	66	88	SP**090408		



Тип	Размеры (мм)					Пластина	Запчасти	
	D	d	L	L1	L2		винт	ключ
TD2-32.5-32-SP09	32.5	32	149	67	89	SP**090408	M3.5*10	T15
TD2-33-32-SP09	33	32	150	68	90	SP**090408		
TD2-33.5-32-SP09	33.5	32	151	69	91	SP**090408		
TD2-56-40-SP09	56	40	211	114	141	SP**090408		
TD2-57-40-SP09	57	40	213	116	143	SP**090408		
TD2-58-40-SP09	58	40	215	118	145	SP**090408		
TD2-59-40-SP09	59	40	218	120	148	SP**090408		
TD2-60-40-SP09	60	40	220	122	150	SP**090408		
TD2-34-32-SP11	34	32	156	70	96	SP**110408		
TD2-34.5-32-SP11	34.5	32	157	71	97	SP**110408		
TD2-35-32-SP11	35	32	158	72	98	SP**110408		
TD2-35.5-32-SP11	35.5	32	159	73	99	SP**110408		
TD2-36-32-SP11	36	32	160	74	100	SP**110408		
TD2-36.5-32-SP11	36.5	32	161	75	101	SP**110408		
TD2-37-32-SP11	37	32	161	76	101	SP**110408		
TD2-37.5-32-SP11	37.5	32	162	77	102	SP**110408		
TD2-38-32-SP11	38	32	163	78	103	SP**110408		
TD2-38.5-32-SP11	38.5	32	164	79	104	SP**110408		
TD2-39-32-SP11	39	32	165	80	105	SP**110408		
TD2-39.5-32-SP11	39.5	32	166	81	106	SP**110408		
TD2-40-32-SP11	40	32	167	82	107	SP**110408		
TD2-40.5-32-SP11	40.5	32	168	83	108	SP**110408		
TD2-41-32-SP11	41	32	169	84	109	SP**110408		
TD2-42-40-SP14	42	40	179	86	109	SP**140512		
TD2-43-40-SP14	43	40	181	88	111	SP**140512		
TD2-44-40-SP14	44	40	186	90	116	SP**140512		
TD2-45-40-SP14	45	40	188	92	118	SP**140512		
TD2-46-40-SP14	46	40	191	94	121	SP**140512		
TD2-47-40-SP14	47	40	193	96	123	SP**140512		
TD2-48-40-SP14	48	40	195	98	125	SP**140512		
TD2-49-40-SP14	49	40	197	100	127	SP**140512		
TD2-50-40-SP14	50	40	199	102	129	SP**140512		

Пластины

Обозначение			Обозначение	Подача, мм/об
ISO P	ISO M	ISO K	ISO N	
SPMG050204-TZ-TU6030			SPGT050204-TU1025	0,05-0,09
SPMG060204-TZ-TU6030			SPGT060204-TU1025	0,05-0,09
SPMG07T308-TZ-TU6030			SPGT07T308-TU1025	0,06-0,10
SPMG090408-TZ-TU6030			SPGT090408-TU1025	0,08-0,16
SPMG110408-TZ-TU6030			SPGT110408-TU1025	0,10-0,20
SPMG140512-TZ-TU6030			SPGT140512-TU1025	0,12-0,24

P (Стали)				M (Нержавеющие стали)		K (Чугуны)			N
Углерод.	Низколег.	Высоколег.	Улучш.	Мартенсит.	Аустенит.	Ковкий	Серый	ВЧШГ	Al и Cu
170-240	140-220	120-180	120-170	110-230	110-220	120-220	170-240	130-200	250-300

